

The logo for UnLocal, featuring the word "UnLocal" in a bold, black, sans-serif font. The text is enclosed within a blue speech bubble outline that has a tail pointing towards the bottom right.

@unlocalinc



# WHAT IS THE NEW PROTECTED LOCATIONS POLICY?

November 2021 updates

DHS released a new memo on October 27th that **replaced previous guidance on sensitive locations.** They recognized that certain areas are in need of special consideration, and the memo created designations for "Protected Areas."

**A protected area is a location that, based on the essential services or activities that occur there, is generally protected from enforcement actions by ICE and CBP.**

UnLocal



Protected  
areas  
include  
the  
following:



schools  
(PreK-12 +  
daycares)



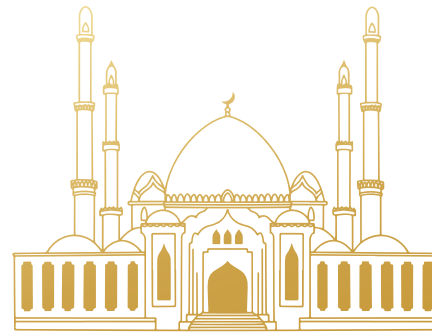
colleges +  
universities



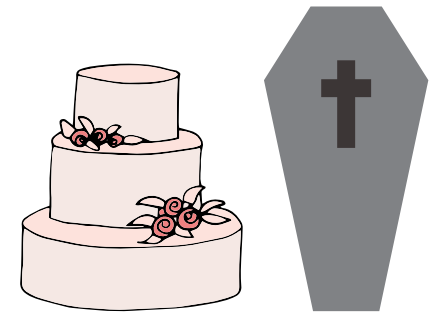
healthcare  
facilities



COVID-19  
vaccination  
sites



places of  
worship



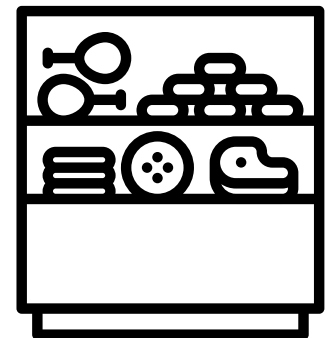
religious or civil  
ceremonies



parades or  
public  
demonstrations



social service  
centers  
(shelters, crisis /  
DV centers, etc)



food  
pantries

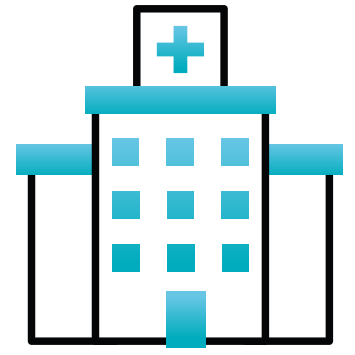
Protected  
areas  
include  
the  
following:



escuelas  
(PreK-12 +  
guarderías)



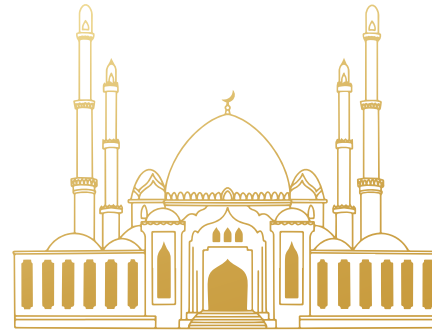
colegios +  
universidades



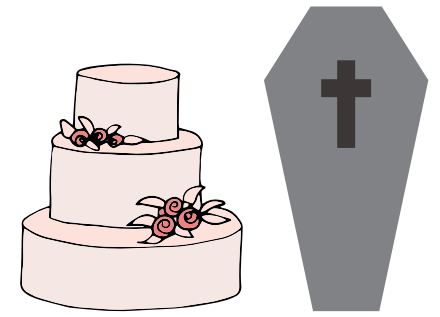
Centros  
médicos



COVID-19  
sitios de  
vacunación



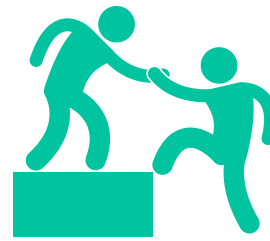
sitios religiosos



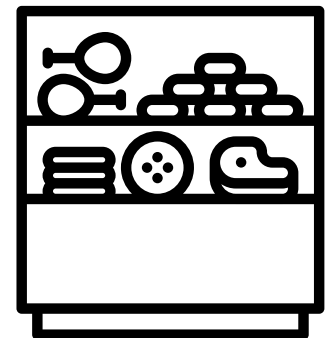
ceremonias  
religiosas o civiles



desfiles o  
manifestaciones  
públicas

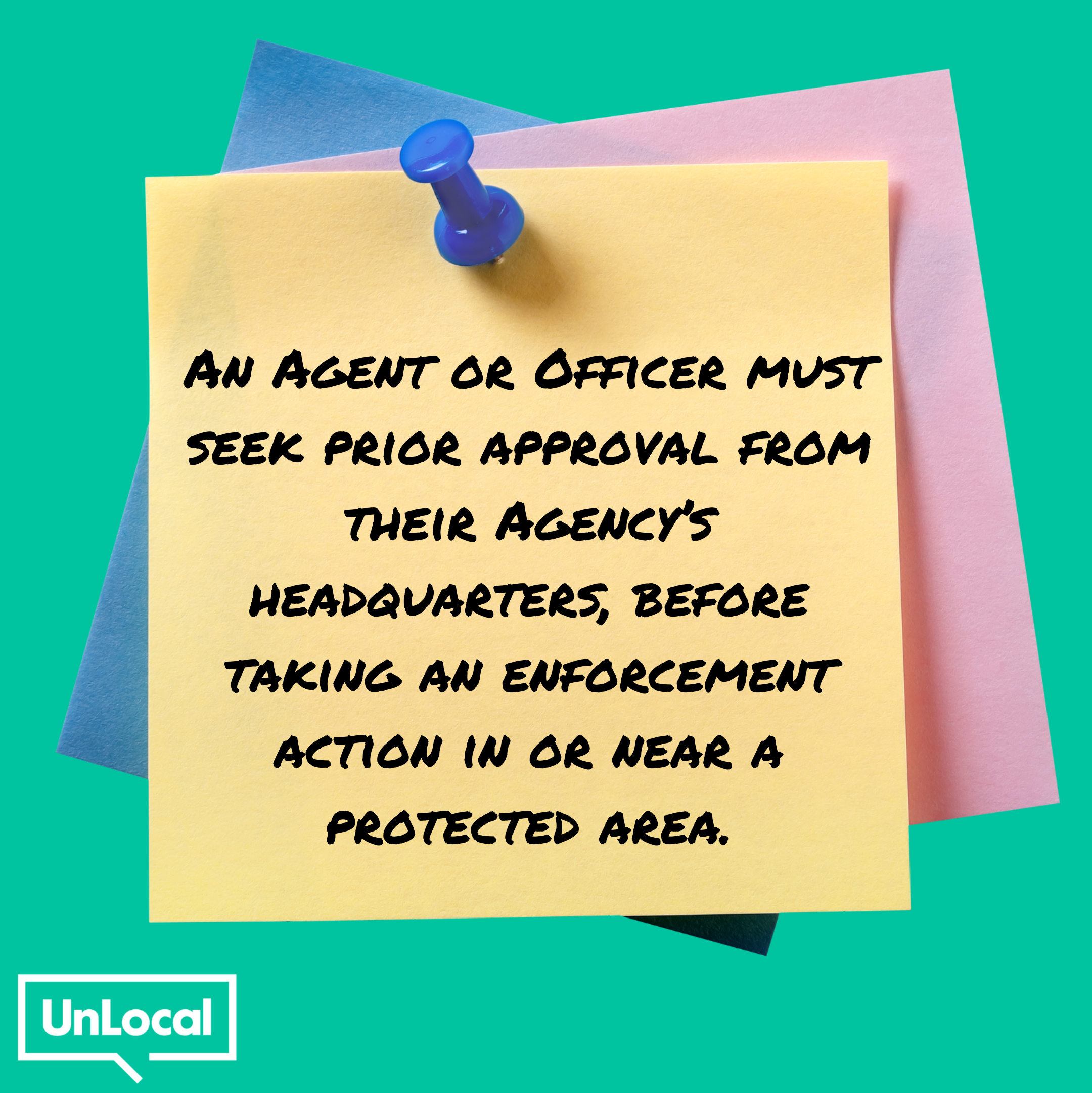


centros de  
servicios sociales  
(refugios, centros  
de crisis / VD,  
etc.)



despensas de  
alimentos





**AN AGENT OR OFFICER MUST  
SEEK PRIOR APPROVAL FROM  
THEIR AGENCY'S  
HEADQUARTERS, BEFORE  
TAKING AN ENFORCEMENT  
ACTION IN OR NEAR A  
PROTECTED AREA.**

**Enforcement actions may occur in or near protected areas in limited circumstances but will generally be avoided.**

The following are some examples of limited circumstances under which an enforcement action may need to be taken in or near a protected area:

- The enforcement action involves a national security threat.
- There is an imminent risk of death, violence, or physical harm to a person.
- The enforcement action involves the hot pursuit of an individual who poses a public safety threat or a personally observed border-crosser.
- There is an imminent risk that evidence material to a criminal case will be destroyed.
- A safe alternative location does not exist.



## To report violations to the protected areas policy:

- You may contact ICE Enforcement and Removal Operations (ERO) through the Detention Reporting and Information Line at (888) 351-4024 or through the ERO information email address at [ERO.INFO@ice.dhs.gov](mailto:ERO.INFO@ice.dhs.gov), also available at [www.ice.gov/webform/ero-contact-form](http://www.ice.gov/webform/ero-contact-form).
- You may contact the CBP Information Center to file a complaint or compliment via phone at (877) 227-5511, or submit an email through the website at [help.cbp.gov/](http://help.cbp.gov/).
- You may contact the Office of the Inspector General at [www.oig.dhs.gov/](http://www.oig.dhs.gov/) and (800) 323-8603 and the DHS Office for Civil Rights and Civil Liberties at [CRCLCompliance@hq.dhs.gov](mailto:CRCLCompliance@hq.dhs.gov) or (866) 644-8360.
- IDP to report a raid in NYC (212) 725 - 6422